



## WALLEYE

Right after spawning, fish the mouth of rivers, creeks and streams that flow into the lake. Bobbers and worms are effective and fish will often be active all day and can be triggered into striking.

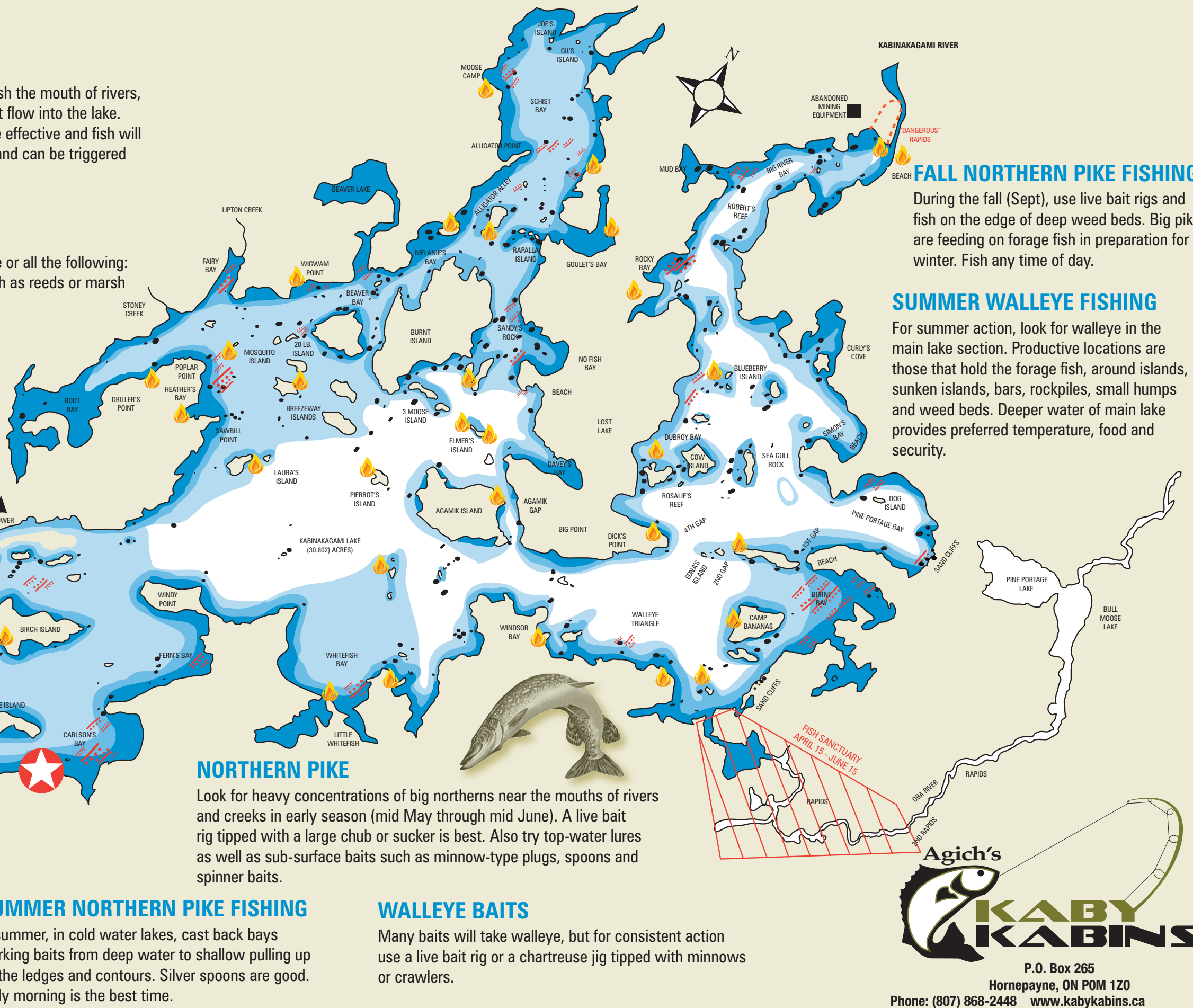
## SPRING NORTHERN PIKE FISHING

The key to spring pike is to find areas that have one or all the following:

- 1) a shallow, sandy bay bordered by vegetation such as reeds or marsh
- 2) protection from wild winds
- 3) direct exposure to sunlight to warm the water.

## WALLEYE

During mid June is a good time to catch walleye on this lake. Troll the shallows with a chartreuse worm harness in about 8 - 12 feet of water.



## FALL NORTHERN PIKE FISHING

During the fall (Sept), use live bait rigs and fish on the edge of deep weed beds. Big pike are feeding on forage fish in preparation for winter. Fish any time of day.

## SUMMER WALLEYE FISHING

For summer action, look for walleye in the main lake section. Productive locations are those that hold the forage fish, around islands, sunken islands, bars, rockpiles, small humps and weed beds. Deeper water of main lake provides preferred temperature, food and security.

## NORTHERN PIKE

Look for heavy concentrations of big northern pikes near the mouths of rivers and creeks in early season (mid May through mid June). A live bait rig tipped with a large chub or sucker is best. Also try top-water lures as well as sub-surface baits such as minnow-type plugs, spoons and spinner baits.

## SUMMER NORTHERN PIKE FISHING

In summer, in cold water lakes, cast back bays working baits from deep water to shallow pulling up on the ledges and contours. Silver spoons are good. Early morning is the best time.

## WALLEYE BAITS

Many baits will take walleye, but for consistent action use a live bait rig or a chartreuse jig tipped with minnows or crawlers.

### LEGEND

- 1-6 feet of water
- 7-11 feet of water
- 12-20 feet of water
- over 20 feet of water
- Shorelunch Sites
- Rocks, Shoals & Reefs
- Weed Beds
- Sand Cliffs (reference points - Only 2 on entire lake and both are on Northeast Shore)
- Firetower (reference points - Only 1 on lake visible from south half of lake)
- Abandoned Hiawatha Gold Mine - great exploring for rock hounds
- Agich's Kaby Kabins



P.O. Box 265  
 Hornepayne, ON P0M 1Z0  
 Phone: (807) 868-2448 [www.kabykabins.ca](http://www.kabykabins.ca)  
 Your Hosts **Stewart, Donna, Lawrence and Ken**