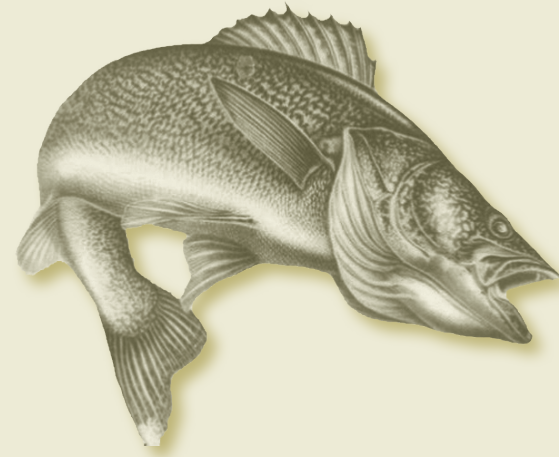


# AGICH'S KABY KABINS

P.O. Box 265  
Hornepayne, ON P0M 1Z0  
Phone: (888) 868-2040 [www.kabylkabins.ca](http://www.kabylkabins.ca)  
Your Hosts Stewart, Donna, Lawrence and Ken



## WALLEYE

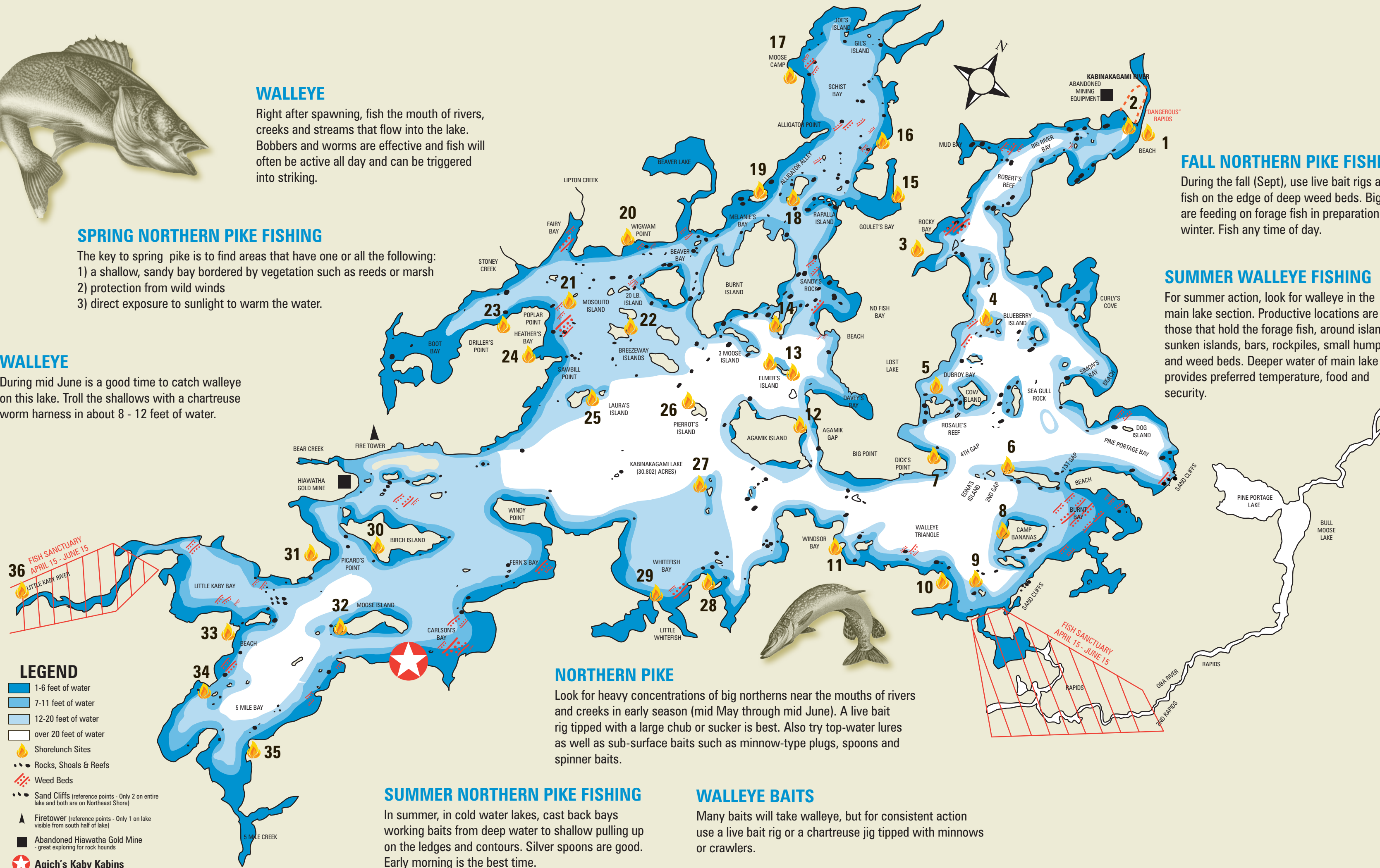
Right after spawning, fish the mouth of rivers, creeks and streams that flow into the lake. Bobbers and worms are effective and fish will often be active all day and can be triggered into striking.

## SPRING NORTHERN PIKE FISHING

The key to spring pike is to find areas that have one or all the following:  
1) a shallow, sandy bay bordered by vegetation such as reeds or marsh  
2) protection from wild winds  
3) direct exposure to sunlight to warm the water.

## WALLEYE

During mid June is a good time to catch walleye on this lake. Troll the shallows with a chartreuse worm harness in about 8 - 12 feet of water.



## FALL NORTHERN PIKE FISHING

During the fall (Sept), use live bait rigs and fish on the edge of deep weed beds. Big pike are feeding on forage fish in preparation for winter. Fish any time of day.

## SUMMER WALLEYE FISHING

For summer action, look for walleye in the main lake section. Productive locations are those that hold the forage fish, around islands, sunken islands, bars, rockpiles, small humps and weed beds. Deeper water of main lake provides preferred temperature, food and security.

## NORTHERN PIKE

Look for heavy concentrations of big northern pike near the mouths of rivers and creeks in early season (mid May through mid June). A live bait rig tipped with a large chub or sucker is best. Also try top-water lures as well as sub-surface baits such as minnow-type plugs, spoons and spinner baits.

## SUMMER NORTHERN PIKE FISHING

In summer, in cold water lakes, cast back bays working baits from deep water to shallow pulling up on the ledges and contours. Silver spoons are good. Early morning is the best time.

## WALLEYE BAITS

Many baits will take walleye, but for consistent action use a live bait rig or a chartreuse jig tipped with minnows or crawlers.

## KABINAKAGOMI LAKE

"Lake of many bays" has much to offer the sportsman. It's fishing, scenery, and location provides an opportunity for rest, relaxation, and time well spent.

## OUR SHORELUNCH SITES

- |                                |                               |                       |
|--------------------------------|-------------------------------|-----------------------|
| 1 - Big River                  | 13 - Elmer's Island (3 sites) | 25 - Laura's Island   |
| 2 - Big River Island           | 14 - R.S.M.                   | 26 - Pierrot's Island |
| 3 - Rocky Bay                  | 15 - Goulet's Bay             | 27 - Midway Island    |
| 4 - Blueberry Island (2 sites) | 16 - Hide Away                | 28 - Whitefish Bay    |
| 5 - Mayer Island               | 17 - Moose Camp               | 29 - Little Whitefish |
| 6 - Second Gap                 | 18 - Donno's Island           | 30 - Birch Island     |
| 7 - 4th Gap                    | 19 - Alligator Alley          | 31 - Picard's Point   |
| 8 - Camp Bananas               | 20 - Wigwam Point             | 32 - Moose Island     |
| 9 - John's Island              | 21 - Mosquito Island          | 33 - Eagles Nest      |
| 10 - Oba River                 | 22 - Chicadee                 | 34 - Crow Island      |
| 11 - Windsor Bay               | 23 - Driller's Point          | 35 - 5 Mile Bay       |
| 12 - Agamik Gap                | 24 - Sawbill Point            | 36 - Chipmunk Falls   |

**NOTE:** This map is intended as a guide for fishing purposes only.

**NOTE:** Guests using Agich's Kaby Kabins boats and motors are responsible for damage done to the boat and/or motor while in the guests use.

**NOTE:** Government approved life flotation devices are supplied for your comfort and safety. Please ensure these flotation devices are in your boat at all times when using the boat. We encourage you to obey boating safety rules and wear flotation devices while in the boat.

**NOTE:** Rapids on the Kabinakagami and Oba Rivers are extremely dangerous and should be avoided.